

Diffusion Gels

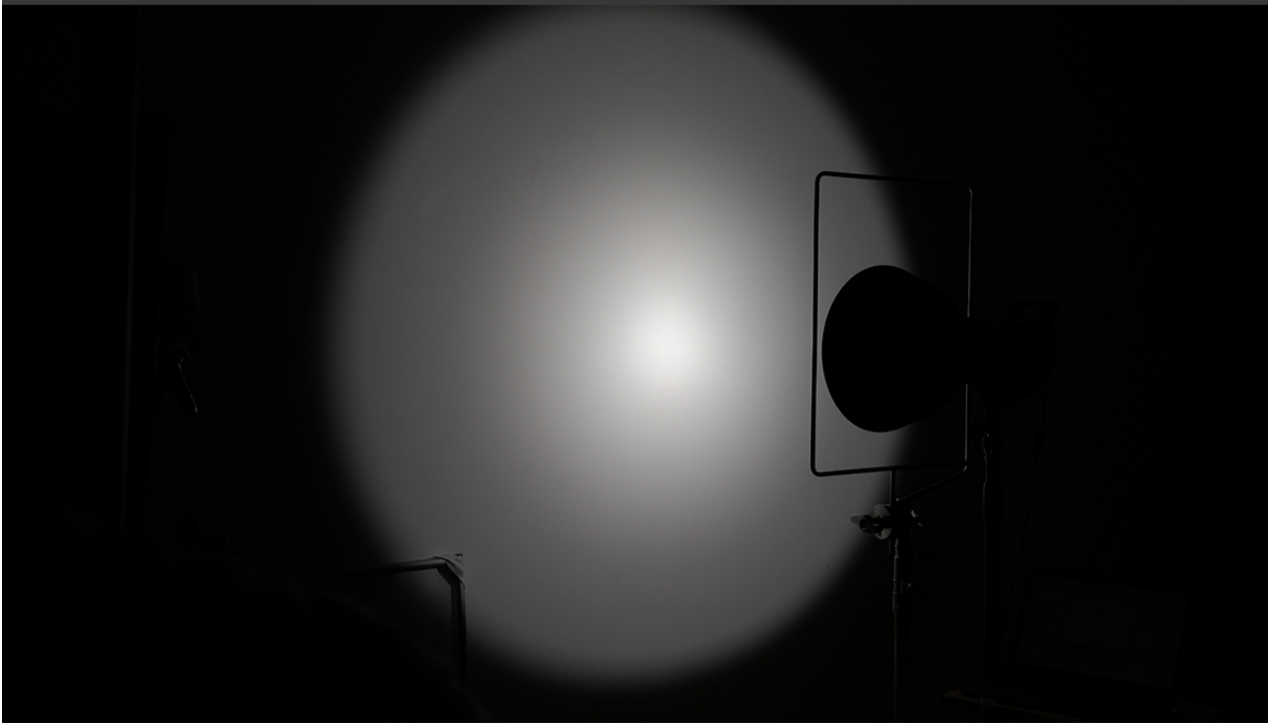
Comparison of
Spread Pattern
Brightness
Shadow

(in order from dimmest to Brightest)

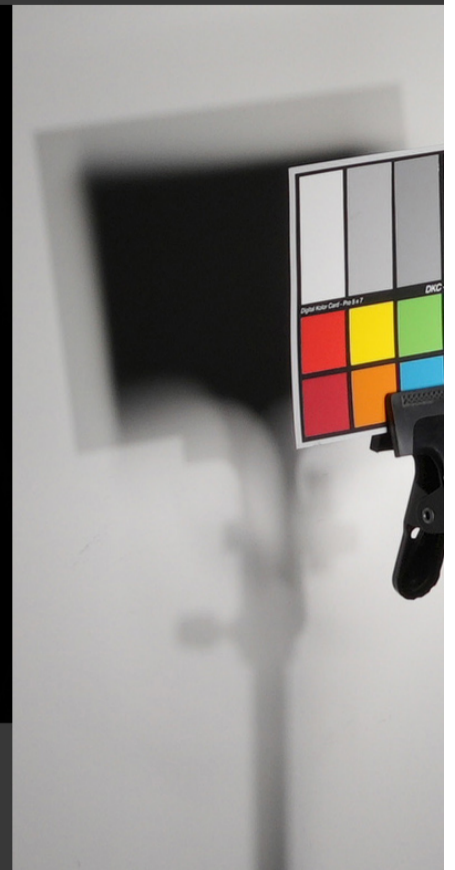
by MarkusPix

* the number on the left is how many F-stops the gel is brighter than standard Softbox material
* reflector used is 16" Magnum which has double shadow

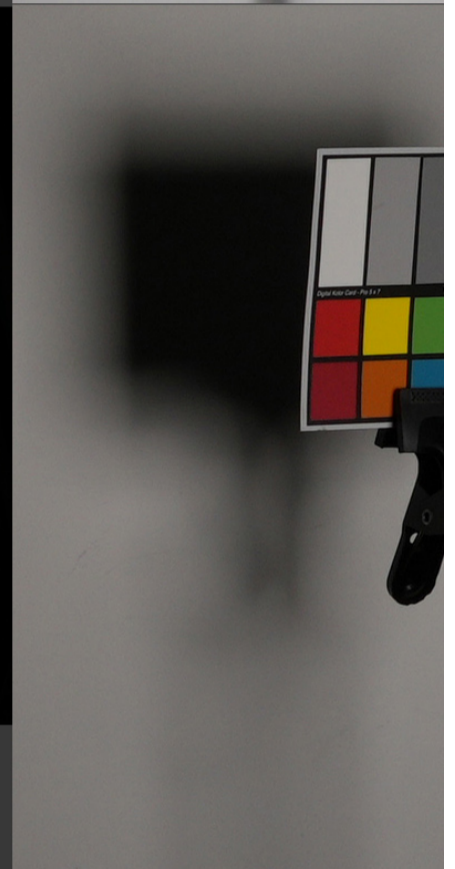
made by MarkusPix on Youtube



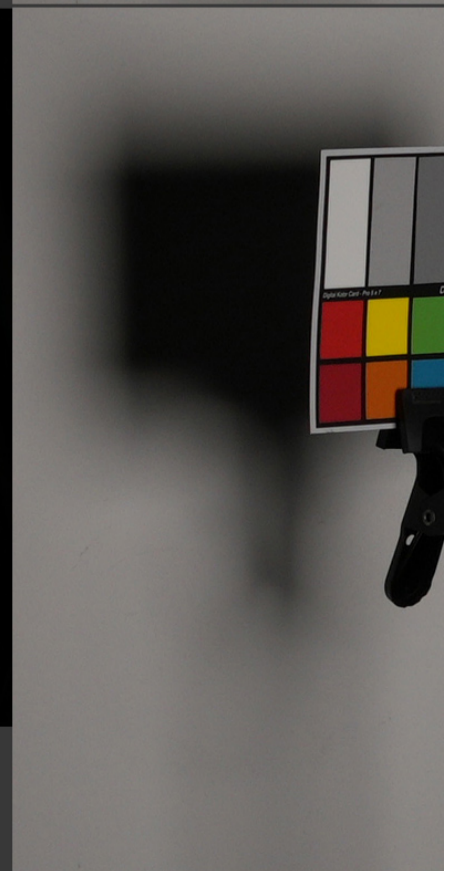
2.4 Bare Light w 16" Magnum @ 3ft



-.3 3062 silent half grid cloth



-.3 Lee 216 full white





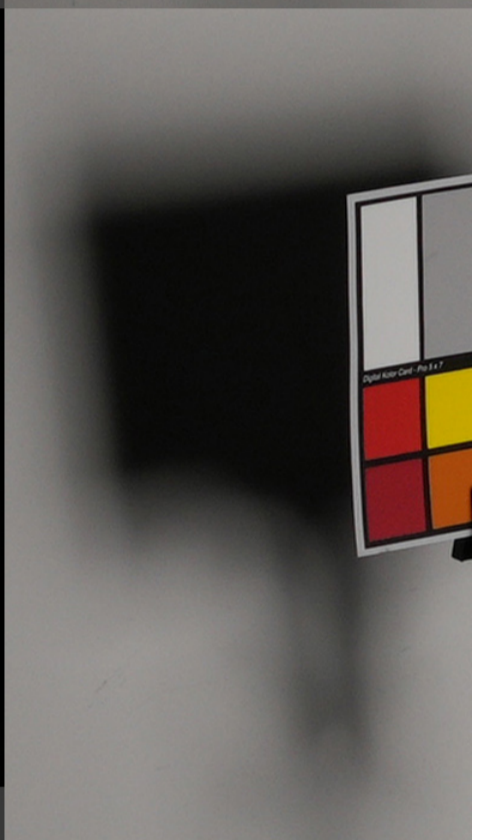
-0.2

full silk



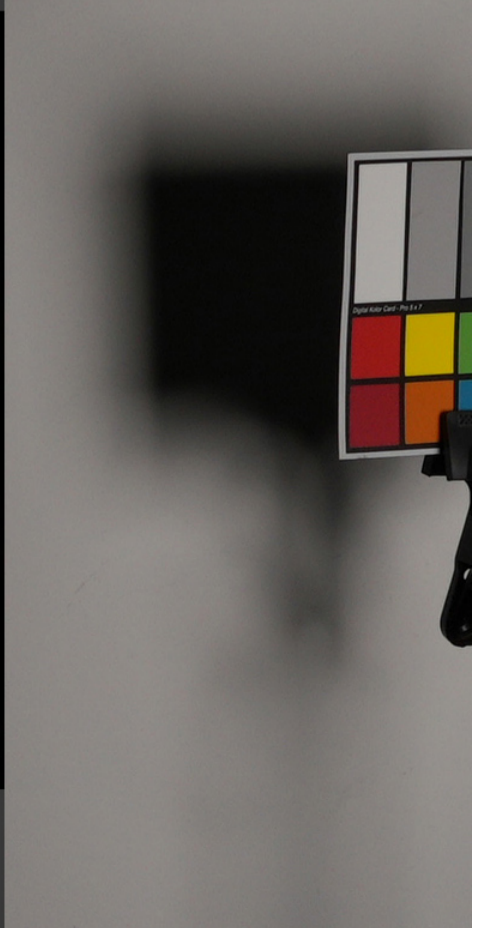
-0.1

Fovitek 4x4



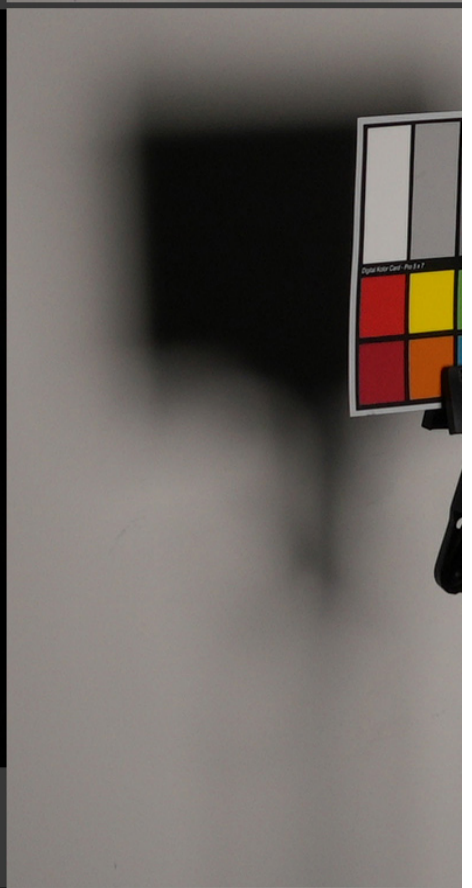
0.0

Softbox material / Sock

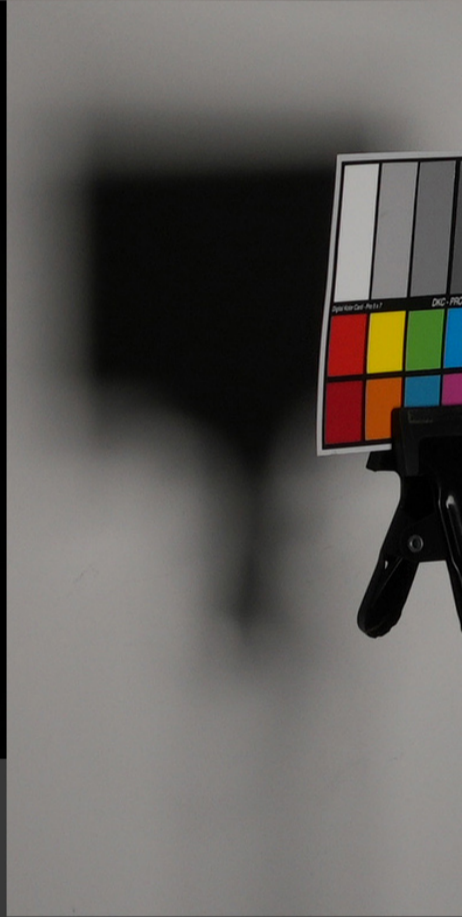




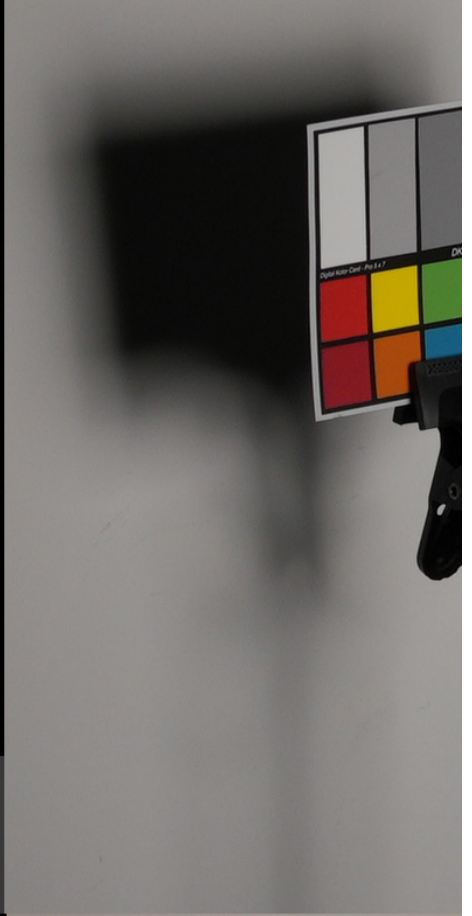
0.1 3026 Tough White

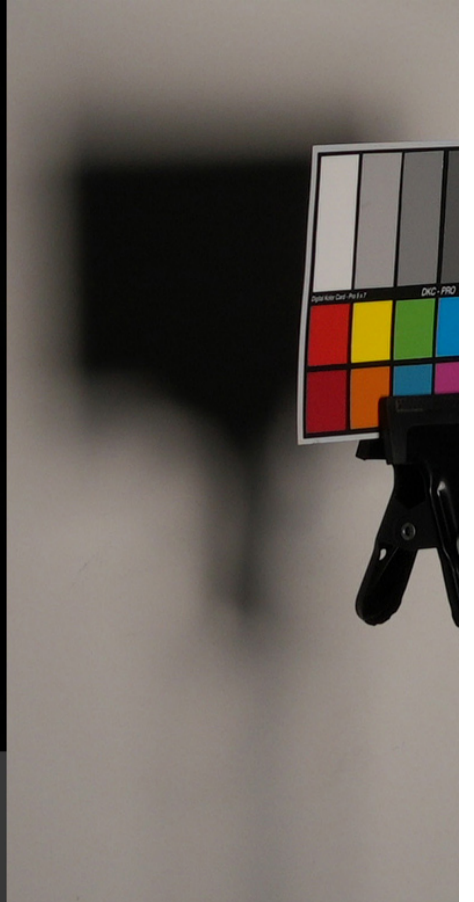


0.1 3032 Light 1/2 Grid



0.2 3064 Silent 1/4 Grid Cloth soft

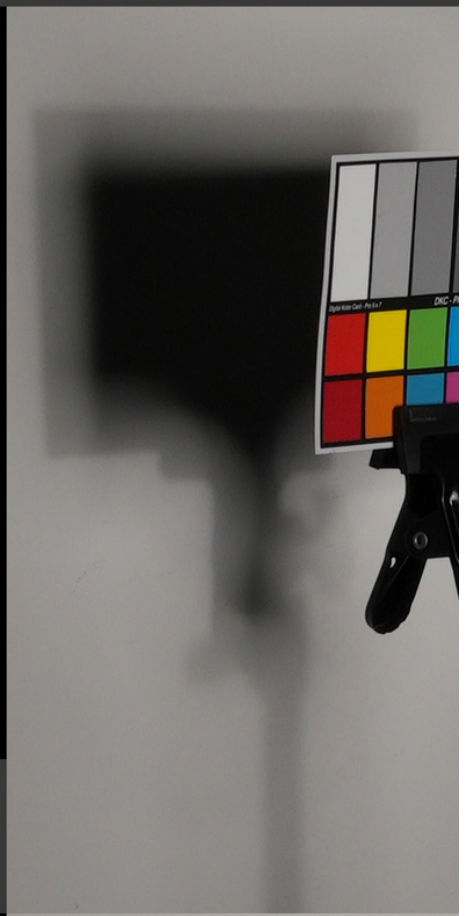




0.2 R116 Rosco E-color Full Tough White



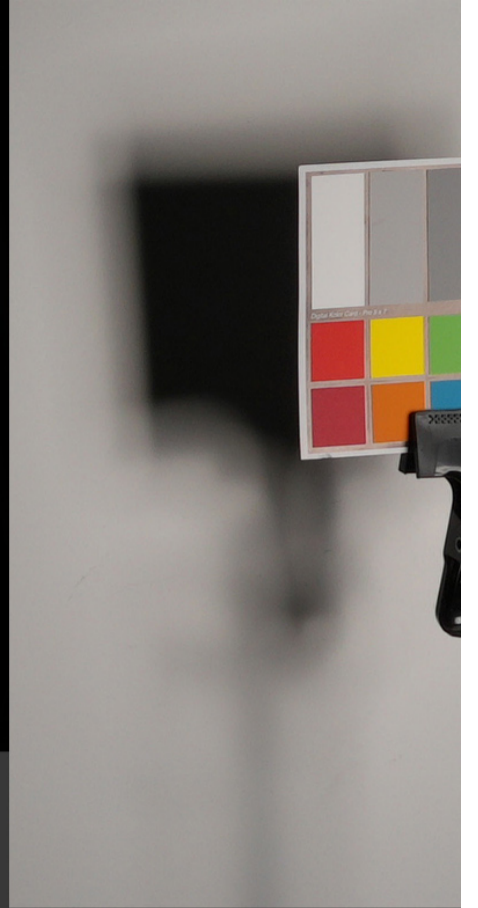
0.4 3034 1/4 Light Grid Cloth



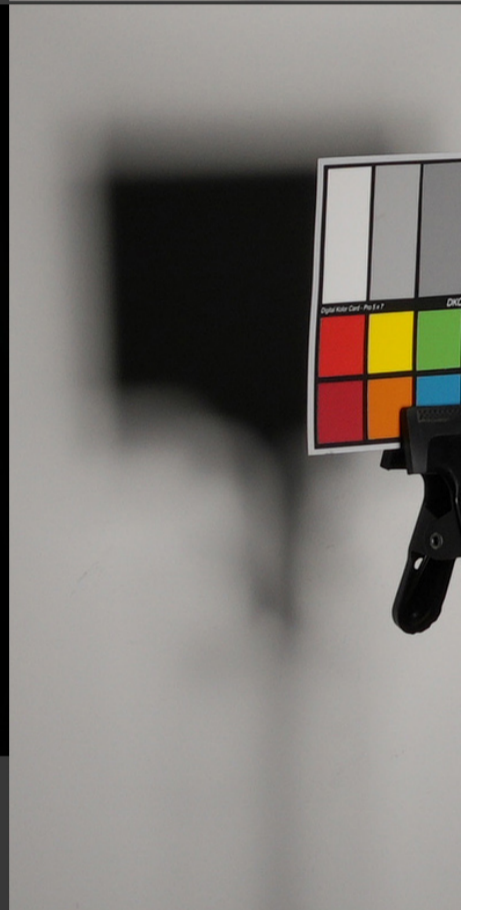
0.6 3006 Tough Spun



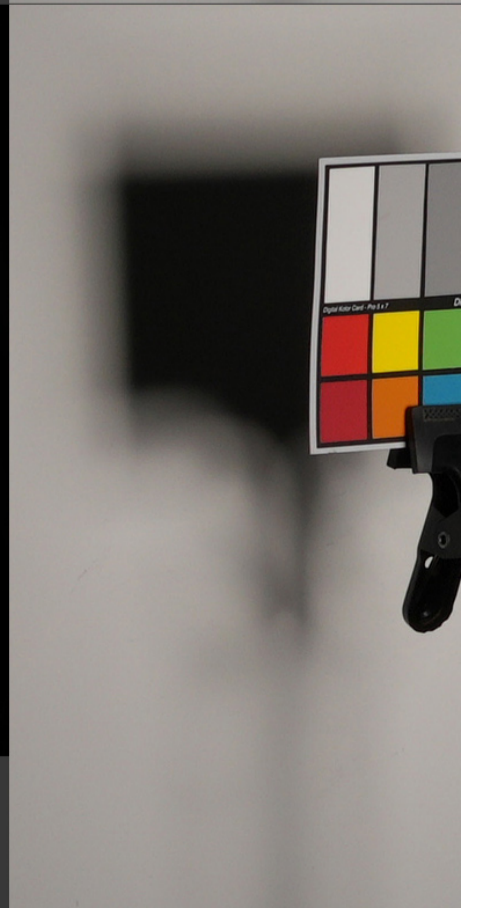
0.7 Lee 251 1/2 White



0.8 Light Tough Rolux

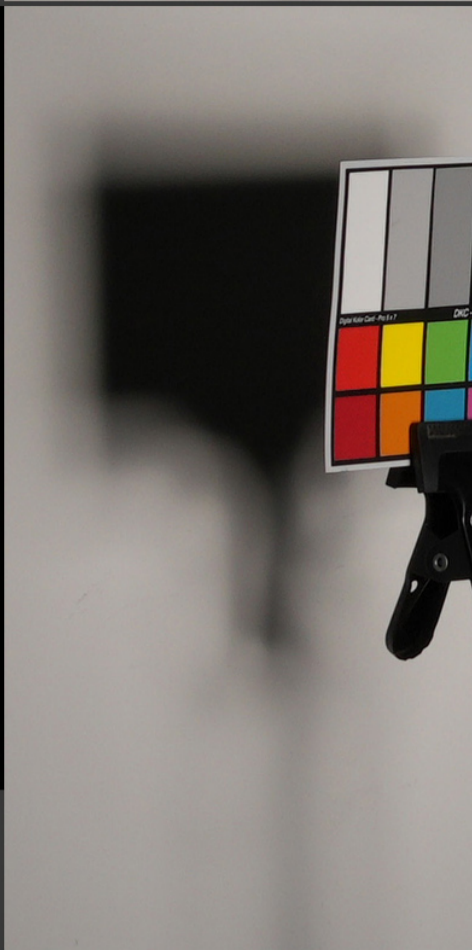


0.8 R103 Tough Frost





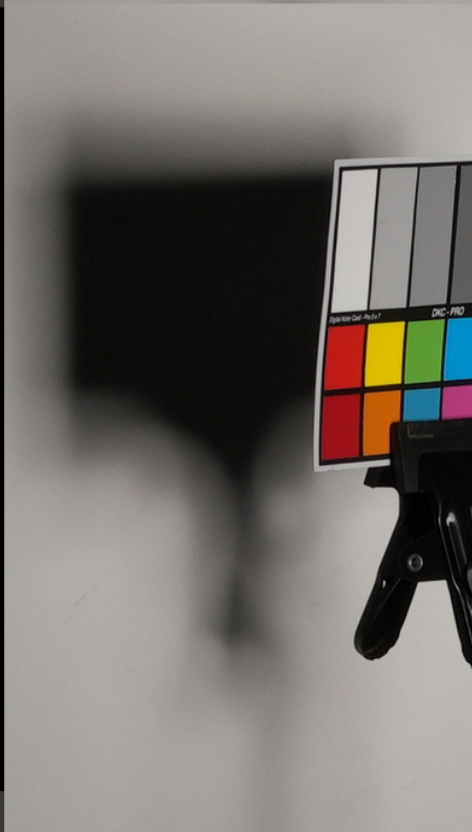
0.9 Rosco 250 ECLR 1/2 white

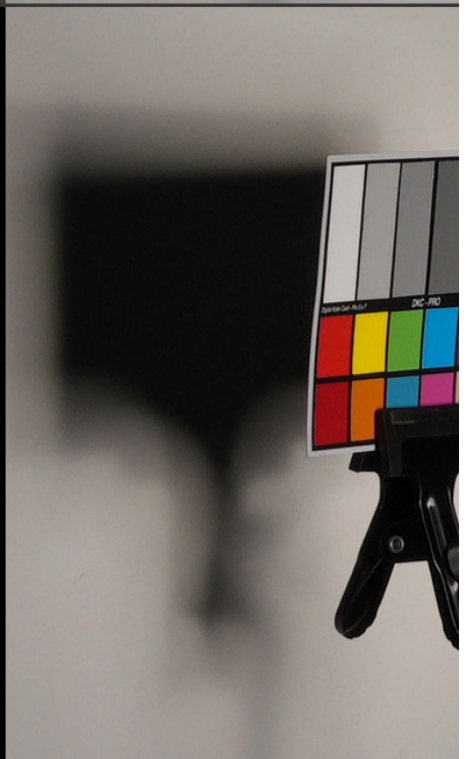


0.9 3027 1/2 White

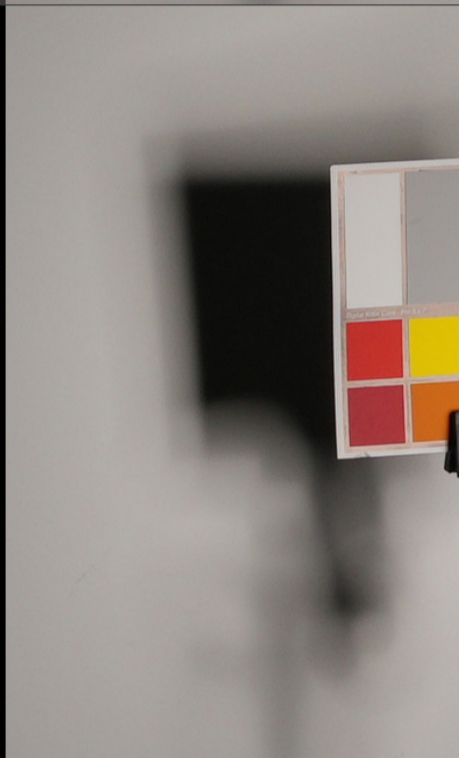


0.9 Lee B250 1/2 White

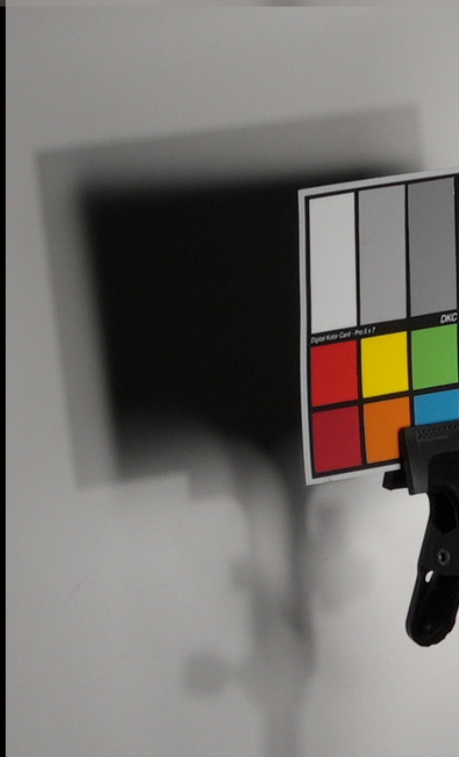




1.0 3009 Light tough Frost loud crinkly sounds



1.0 Lee 263 Hampshire Frost very delicate fabric



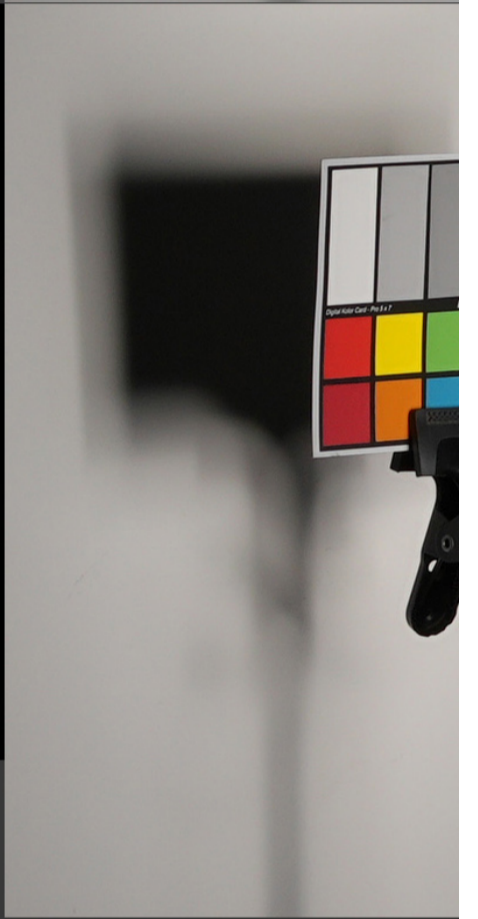
1.3 90's mesh stocking



1.3 3007 Light tough Spun

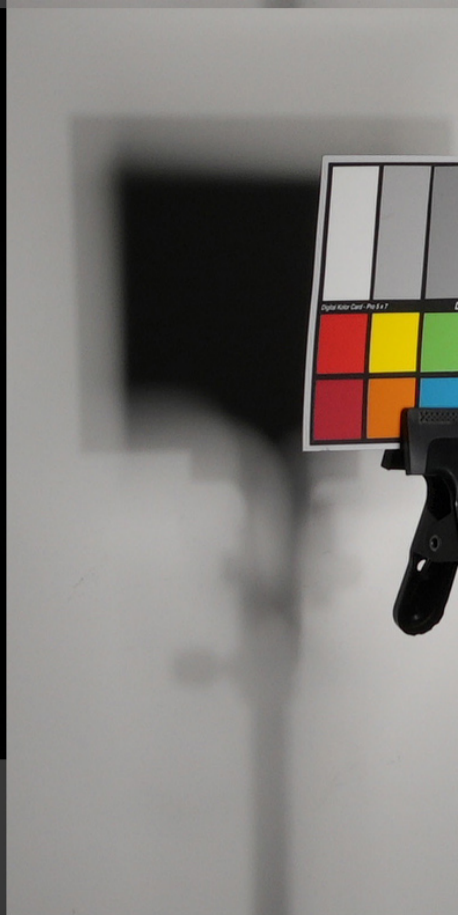


1.3 3015 Tough Light Silk

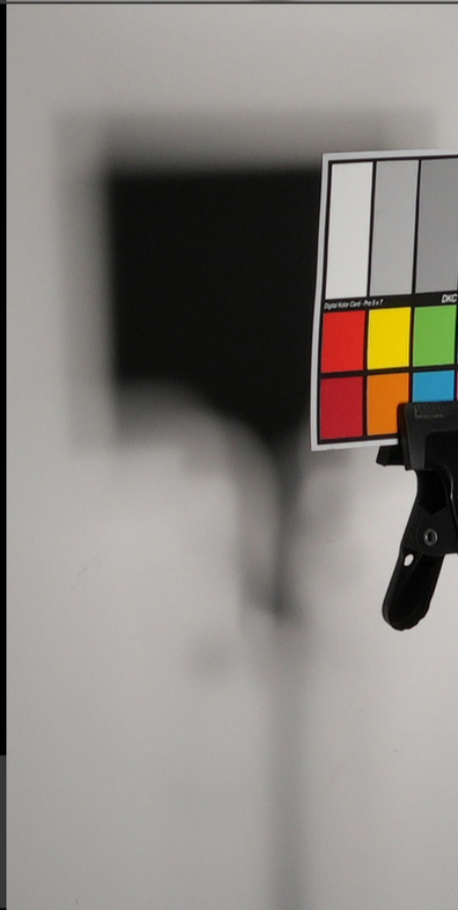


1.3 Westcott 1/4 fabric

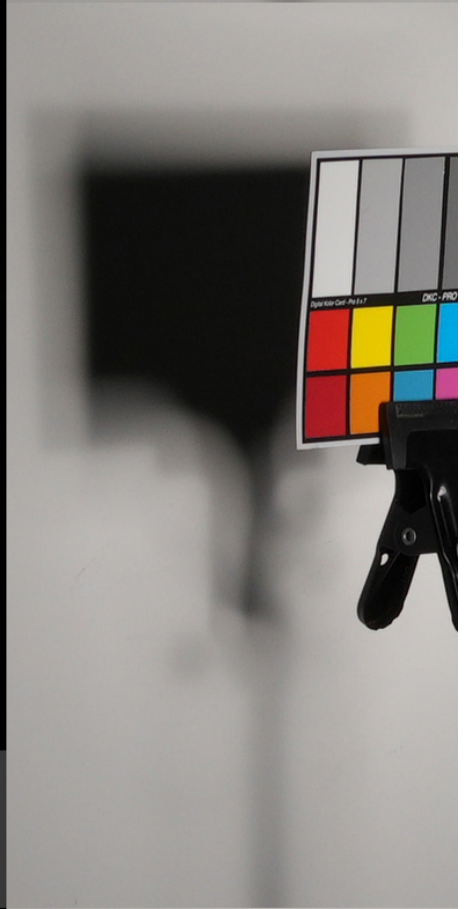




1.4 3022 1/4 Tough Spun



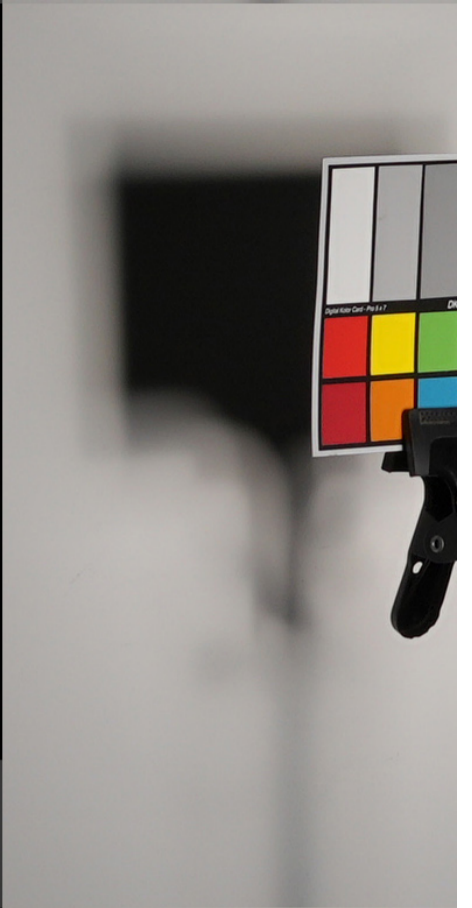
1.4 3028 Tough 1/4 White



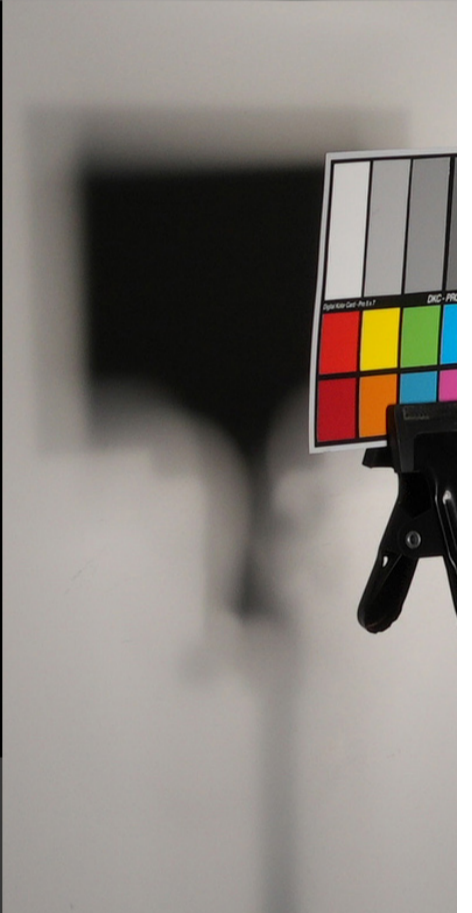
1.4 3040 Powder Frost



1.4 Lee 252 1/8 White

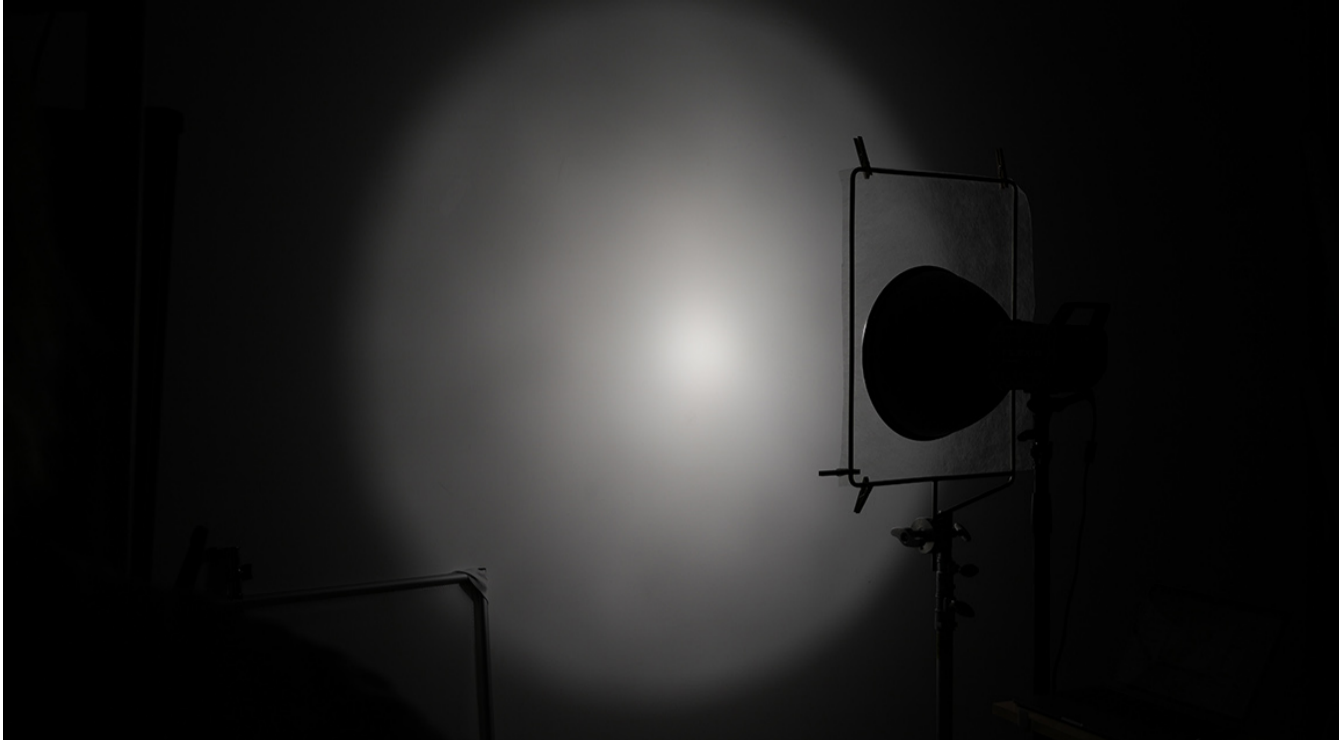


1.4 Lee 410 Opal Frost delicate, loud crinkly sounds



1.5 3010 Opal Tough Frost delicate, loud crinkly sounds

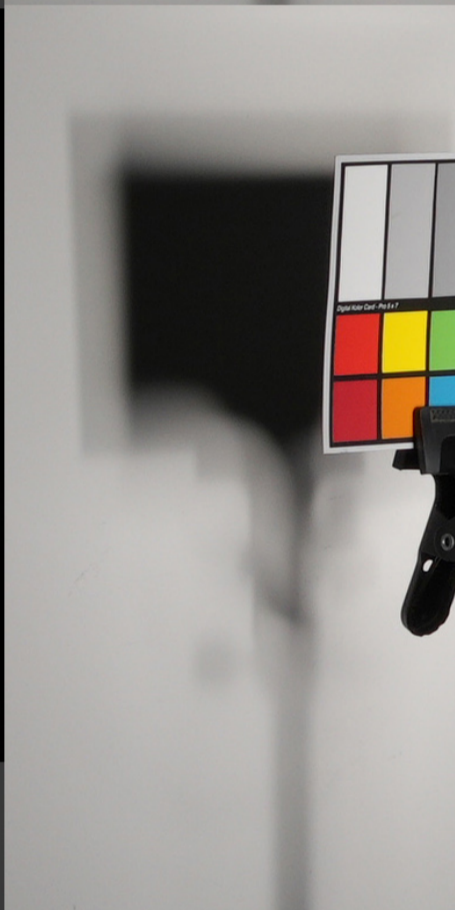




1.7 Lee 265 1/4 Tough Spun Frost



1.9 R104 Tough Silk



2.0 3020 Light Opal Tough Frost loud crinkly sounds

